

Apples for apples

From data owners to application

Presented by

Bruce Munro

Manager Innovation & Planning, University Library



Data Registers

CAUL Statistics

- ✓ Statistic
- ✓ Division
- ✓ Owner
- ✓ Source
- ✓ Collection procedure
- ✓ Definitions
- ✓ Include/exclude

Data Catalogue

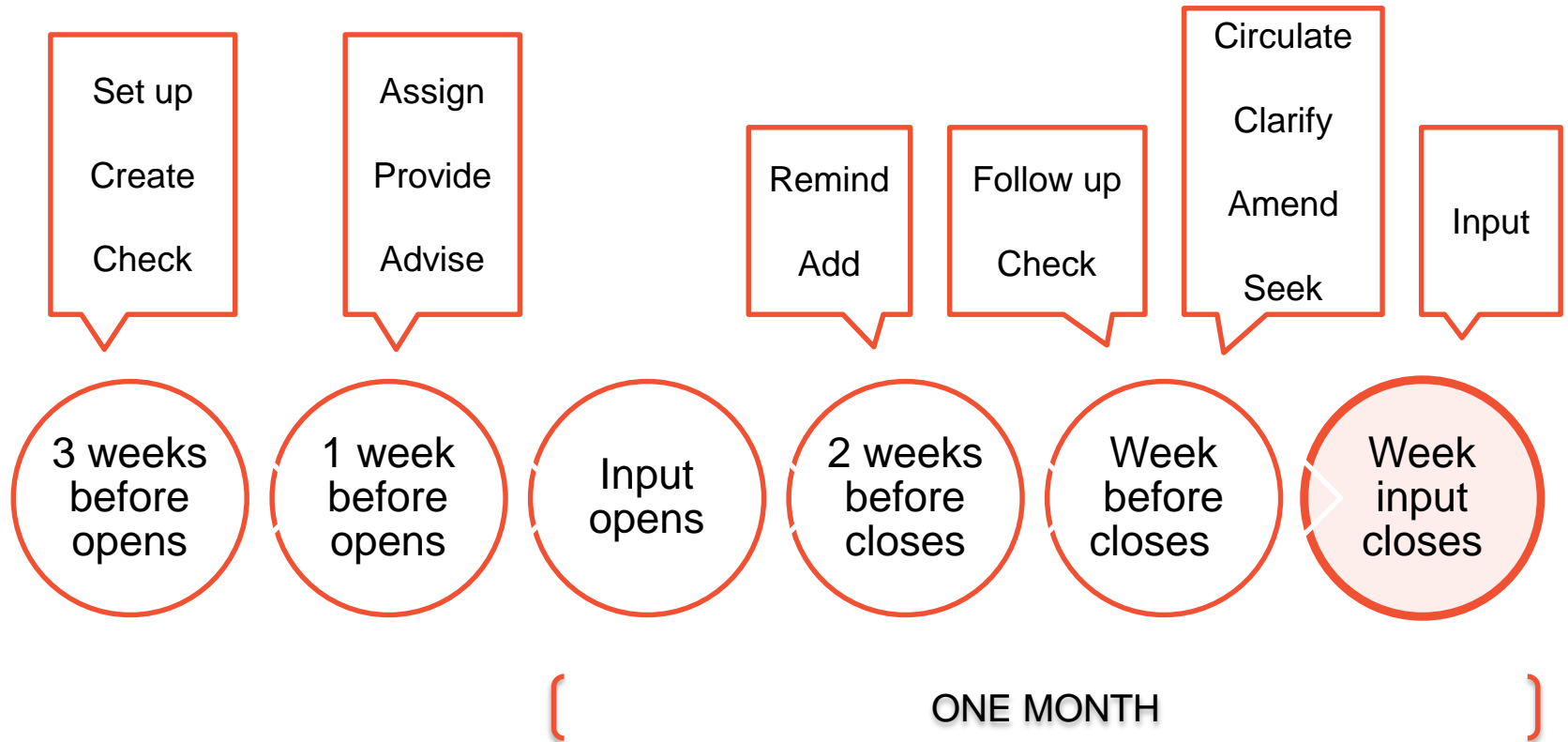
- ✓ Area
- ✓ Category
- ✓ About
- ✓ Source
- ✓ Update frequency
- ✓ Owner
- ✓ Report restrictions
- ✓ Usage notes
- ✓ Authentication
- ✓ Access

Roles & Responsibilities

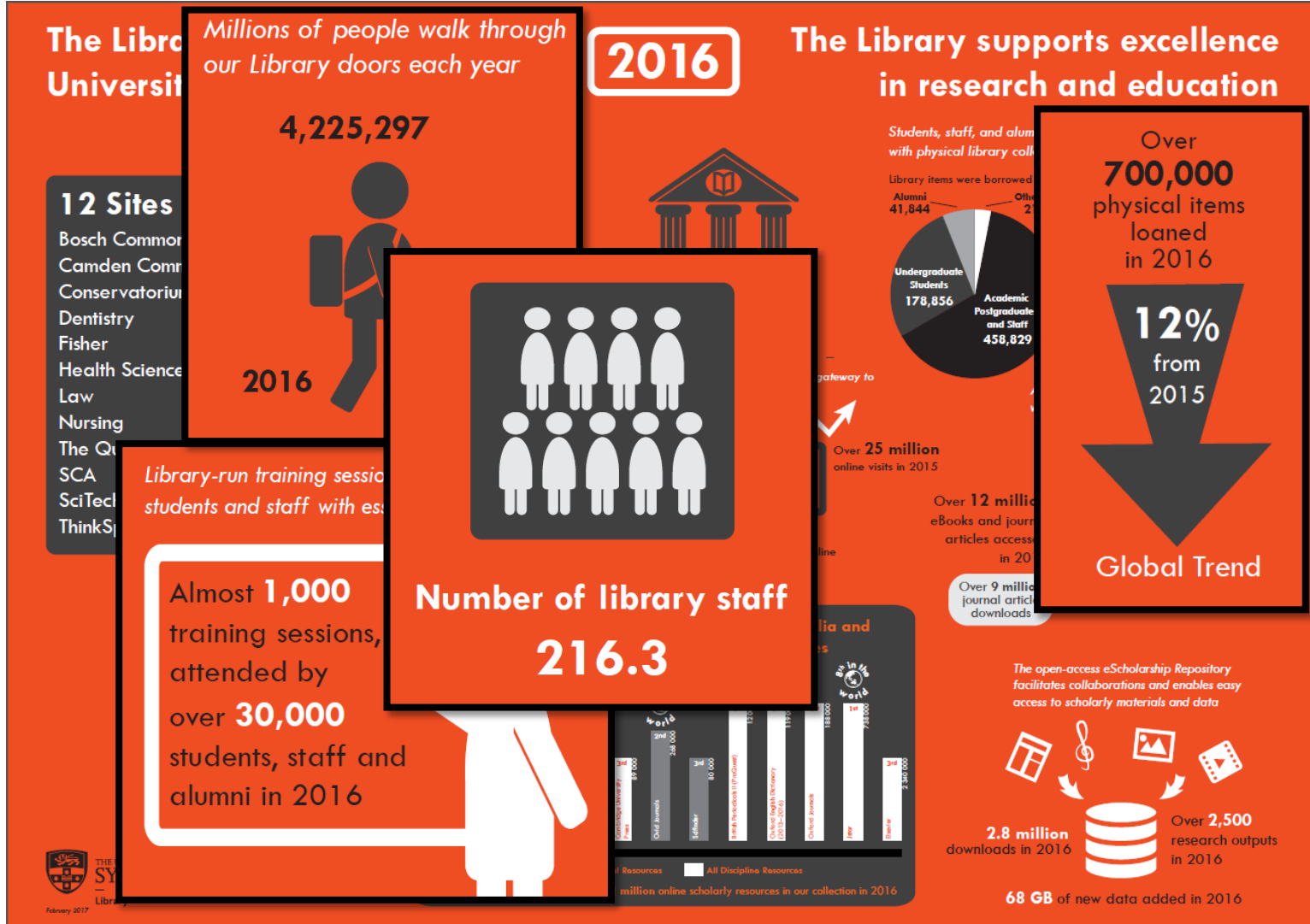
R esponsible	the functional role who performs the activity	A ccountable	the functional role <u>ultimately</u> held responsible or are authorised to approve the activity
C onsulted	the functional role(s) kept in the loop prior to a final decision or action	I nformed	the functional role informed as FYI once action is taken

	Service Improvement Officer	Statistic Owner	Director	UL
Set up annual reporting as full Cascade project in operations plan	R A			
Advise statistics owner of impending collection	R	C		
Check currency CAUL Register information & amend as appropriate	R	I		
Assign Cascade tasks to appropriate statistical owners	R A			
Provide CAUL reporting templates, previous year values to statistical owners	R			
Ensure CAUL Instructions for each category are up to date	I	R A		
Gather statistics		R		
Liaise with CAUL for clarification about statistical definitions as required	I	R		
Amend CAUL Register with CAUL advice	A			
Report statistic to Service Improvement Officer (Includes ULANZ Reporting template and deemed list)		R		
Mark reported statistic task in Cascade as completed		R		
Add reported statistics into draft input file as required	R			
Compare to previous years', account for any large variances over previous year.	C	R		
Send completed ULANZ template and deemed list to CAUL	R A			
Circulate to Directors, University Librarian and respond to any questions arising	R		C	C
Approved for Submission to CAUL	I		C	R A
Input into CAUL statistics portal	R A	I	I	I
Retain copies of correspondence with CAUL, statistics workings, update CAUL register as relevant	R A			

CAUL Statistics Input Timeline



Infographic



Data Dashboard

