

# MORE THAN A REPOSITORY...


... UNE's journey from ePublications@UNE  
to  
Research UNE



Crystal Brunyee  
Research Outputs Officer  
University Library  
University of New England

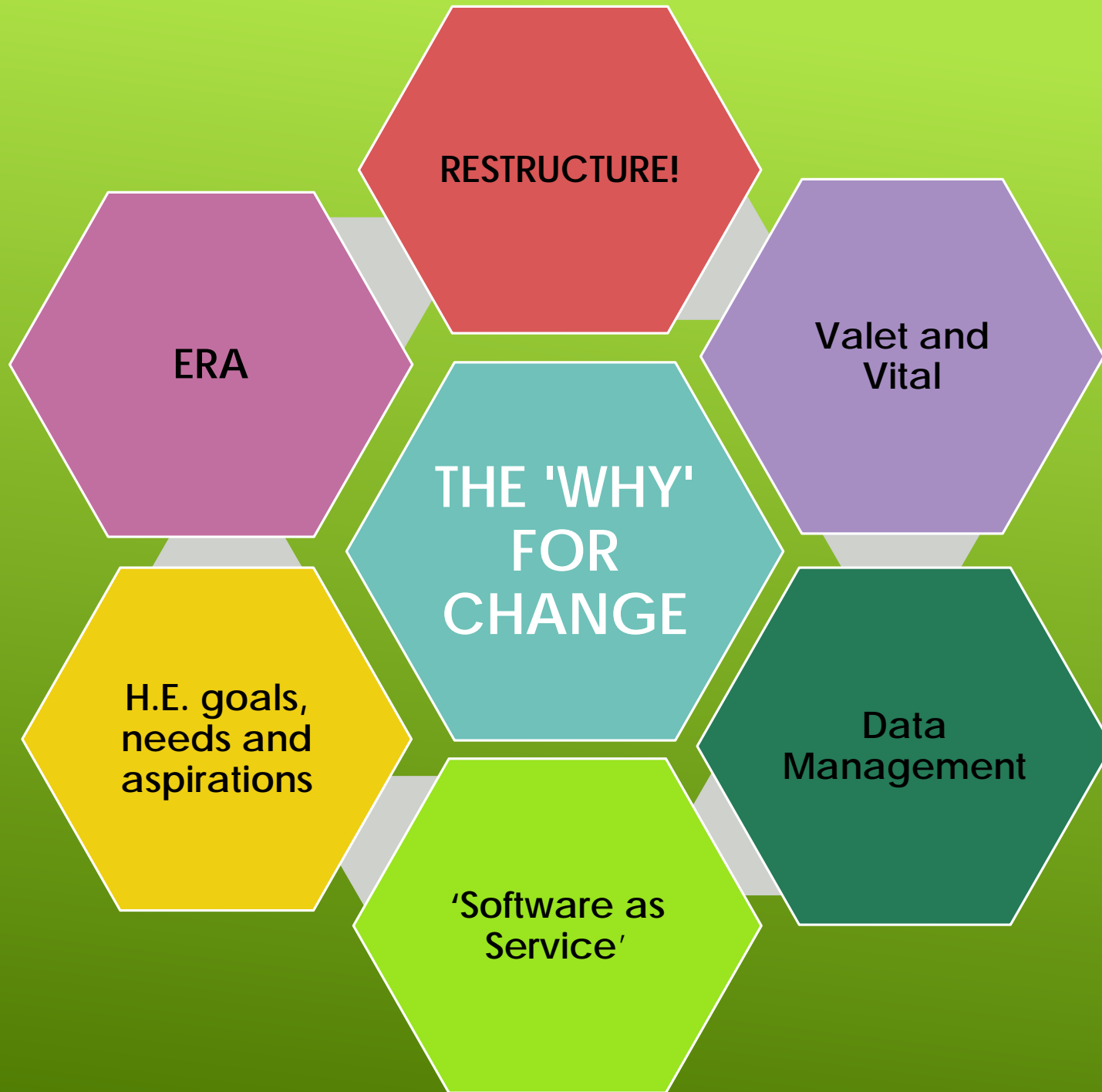


# A COLLABORATIVE SYSTEM REQUIRES A COLLABORATIVE SOLUTION...

- ▶ UNE's repository has never been solely 'owned' by the Library
  - ▶ Admin units draw key tasks and functions from repository data
    - ▶ Research Services, UNE Business Intelligence, and Marketing and Public Affairs (MAPA)
  - ▶ 'Source of Truth' for publications across the University
  - ▶ Key system for ERA/academic promotions/grants
- 

- ▶ Valet / Vital and Fedora
- ▶ In-house developed Chute application
- ▶ RedBOX Research data
- ▶ Strong collaborative networks existed between the UNE Information Technology Directorate (ITD) and Library
- ▶ In-house support and institutional knowledge

WHERE WE CAME FROM...



## The tender process

- ▶ **+200 requirements**
- ▶ Drawn from consultation with stakeholders
  - ▶ Tight timelines, requirements and system interoperability guided selection
- ▶ Prosentient successful vendor



THE SEARCH BEGINS...

**DSpace-CRIS** selected due to:

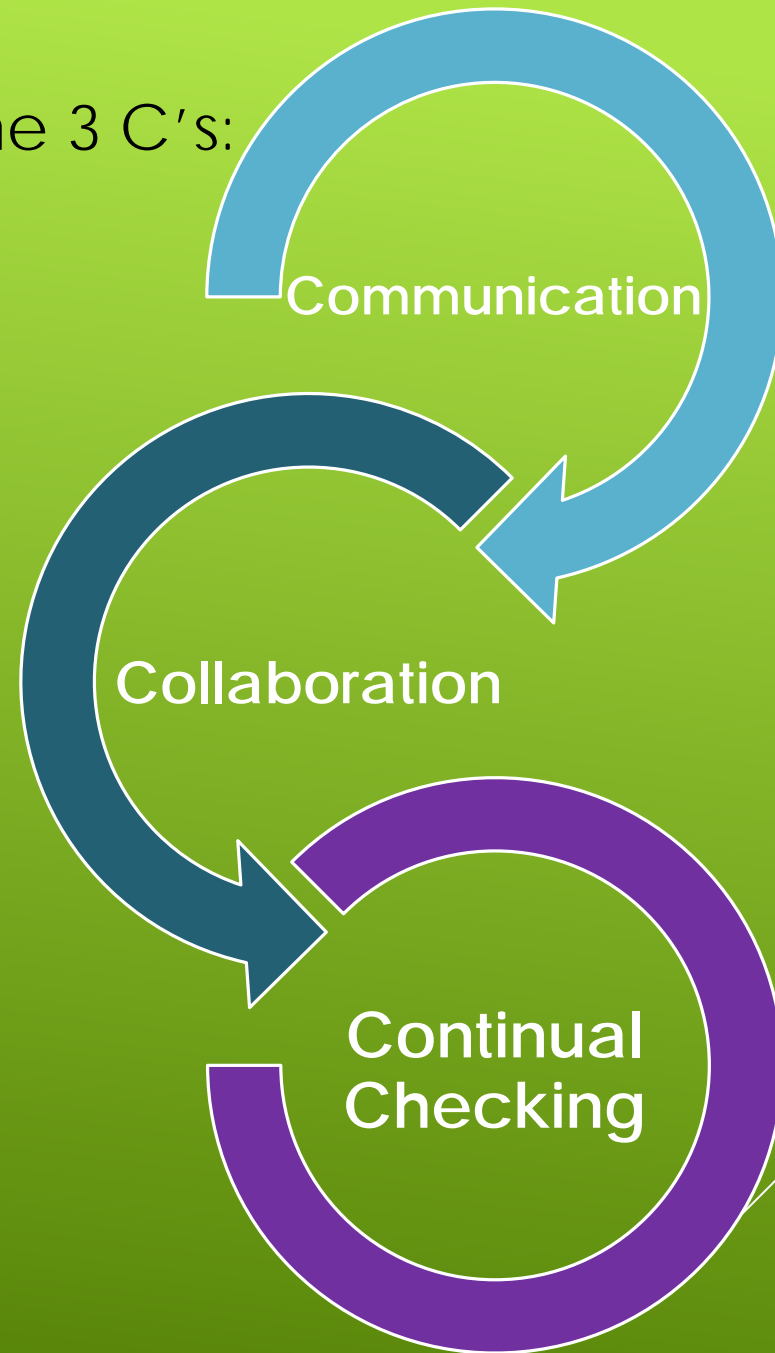
- ▶ CRIS interoperability
- ▶ ↑ data management and reporting capabilities
- ▶ Open source flexibility
- ▶ Vendor support and responsiveness
- ▶ Product exceeded current requirements

...AND ENDS WITH DSPACE-CRIS

# THE PROJECT BEGINS...

- ▶ Project start date:  
**19<sup>th</sup> October 2017**
- ▶ Contract sign date:  
**18<sup>th</sup> June 2018**
- ▶ Go LIVE:  
**2<sup>nd</sup> October 2018**

The 3 C's:



# Repository Upgrade Project

## Project Timeline

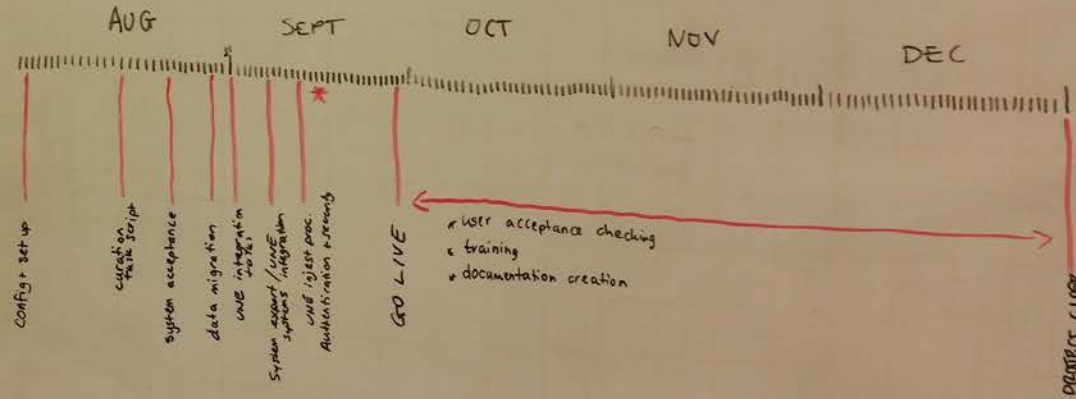
- DSpace config & set-up - 2 Aug 2018 \*
- Curation task script - 15 Aug 2018
- System Acceptance - 21 Aug 2018
- Data Migration (datasets publications profiles) - 28 Aug 2018
- UNE IT integration tasks - 31 Aug 2018
- System export services - 6 Sept 2018
- UNE systems integration - 6 Sept 2018
- UNE Ingestion Processing - 11 Sept 2018
- Set-up authentication & security - 11 Sept 2018

\*SYSTEM GO LIVE — 29 Sept 2018  
 Project close-off — 2 Dec 2018

## Tasks

- Valet Migration
- Stats Migration
- Chute export + migration
- Dataset - staff vs student mapping
- Procedures updated

\* FRIDAY 14<sup>th</sup> SEPT.  
 Training + Go-live.



THE ALL IMPORTANT GANTT CHART (SORT OF...)





Sourced from Pixabay

# GO LIVE!

Tuesday 2<sup>nd</sup> October



# ONGOING ISSUES...

- ▶ **MODS OAI-PMH**

Metadata Object Description Schema

Open Archive Initiative-Protocol for Metadata Harvesting

Inconsistent, localised – added to timeline

- ▶ **Researcher profiles**

UNE's unique identifier was not applied consistently across the records, required data remediation to ensure researcher profiles were correctly populated



- ▶ **Thesis examination**

Intrinsically linked to thesis administration and examination workflows

## ► CRIS data linkages

**CRIS Bug discovered** – UNE authors includes other details, e.g. ORCID on publication record

Profile					
<b>Credit Name</b>	Einar Thorsteinsson	<b>Full Name</b>	Thorsteinsson, Einar	<b>Email</b>	ethorste@une.edu.au
<b>ORCID</b>	0000-0003-2065-1989	<b>Scopus Author ID</b>	8286664200	<b>UNE Researcher ID</b>	une-id:ethorste
<b>Given Name</b>	Einar				
<b>Surname</b>	Thorsteinsson	<b>Preferred Given Name</b>	Einar	<b>School/Department</b>	School of Psychology and Behavioural Science

<b>Title:</b>	<b>Alcohol Involvement and the Five-Factor Model of Personality: A Meta-analysis</b>
<b>Contributor(s):</b>	Malouff, John Michael (author); Thorsteinsson, Einar Baldvin (author)  ; Rooke, Sally Erin (author); Schutte, Nicola (author) 

BUG DISCOVERED!

The Library is  
not an island

DOCUMENT,  
DOCUMENT, DOCUMENT!

Celebrate the  
wins, learn from  
pitfalls

Ask questions!

## LESSONS LEARNT

Communicate  
early and often

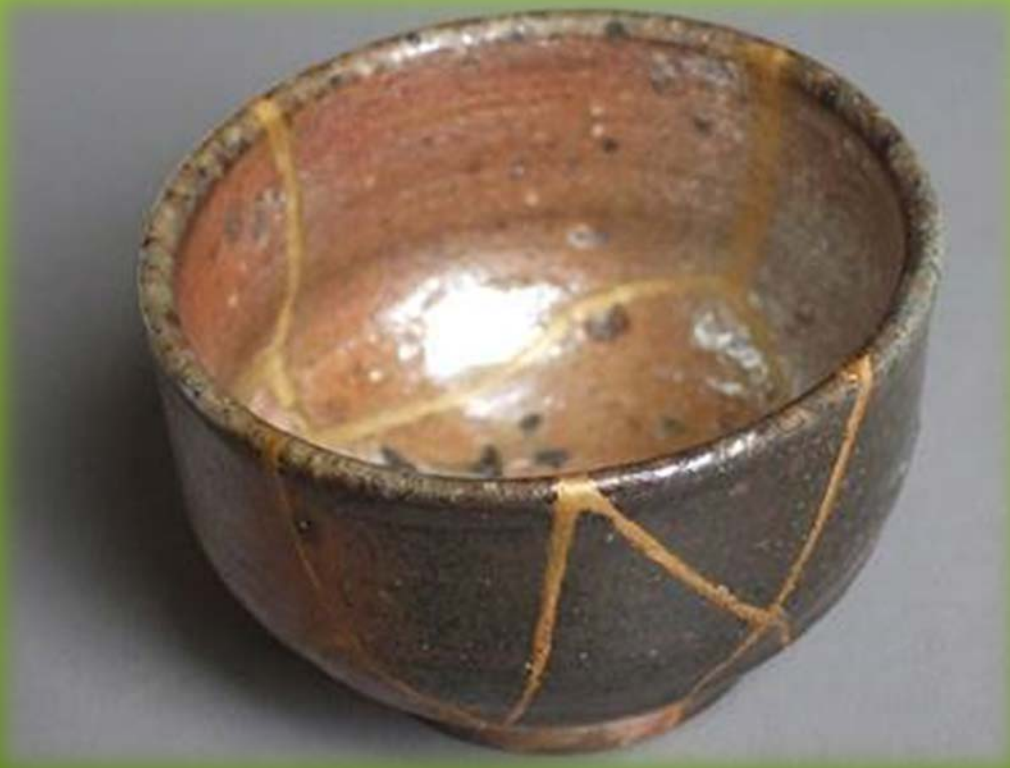
Capture data,  
processes, decisions  
and workflows

Base metadata on  
standards

Take breaks!

Have processes to  
audit data

# KINTSUGI



Credit: CC BY-SA by  
[Haragayato](#)

The restructure did what  
restructures do best...

...Highlighting  
the 'cracks' and weaknesses  
within the organisation and  
provided the opportunity to  
rebuild

# SO WHAT NEXT?

- ▶ Preparing for the next ERA round
- ▶ Planning next project stages... Archivemática, CKAN integration
- ▶ Pulling different data and publication sources
- ▶ Exploring DSpace-CRIS functionalities
- ▶ Plan for future developments
- ▶ Continuing the discussion around the connectivity of the repository....

Proving that RUNE offers

**SO MUCH MORE THAN A REPOSITORY**

to the UNE Community and researchers

# THANKS GO TO...

- ▶ UNE Senior management
- ▶ UNE Project stakeholders
- ▶ All members of the project team
- ▶ YOU for listening



# CONTACT US

For more information or to provide feedback:

Research **une** [rune@une.edu.au](mailto:rune@une.edu.au)



Twitter: [@UNELibrary](https://twitter.com/UNELibrary)



Facebook: <https://www.facebook.com/UNELibrary/>

The RUNE team:



Allison



Crystal



Twyla



Matt